



Eclipse Module  
**305-320W**

## **BEHIND THE ECLIPSE**

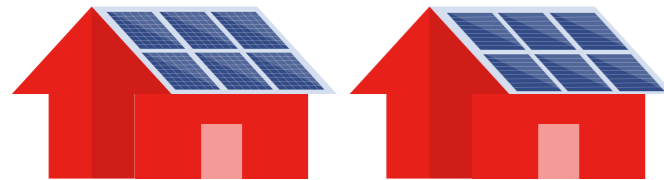
When we began work on this new solar module, we considered every element that defines a perfect solar module — performance, reliability, heat resistance, PID, price and so on. We challenged ourselves to find the best, the most forward-looking way possible, to engineer each one of them. Something radically different from anything before .

As a perfect solar module, our Eclipse solar module meets all of your needs. Innovative module technology utilizes traditional solar cells, increases efficiency, improves reliability and aesthetics, and reduces BOS cost.



**Generate 15% More Power and Get More Lifetime Project Returns**

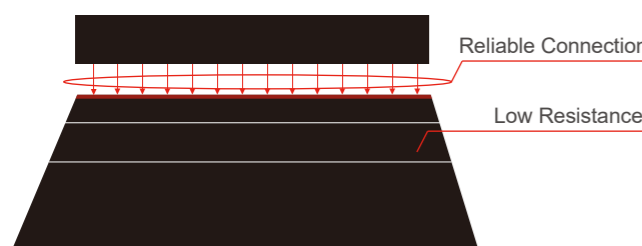
**+15%**



**Reduce System BOS and Installation by up to 10%**

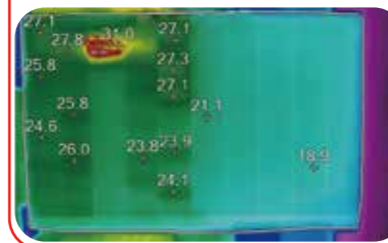


**Enhanced Reliability and Durability**



**Dramatically Reduced Hot Spot Effect**

**5 Hours Shading Test**



Maximum Value **47.3°C**  
Average Value **23.9°C**  
Minimum Value **15.6°C**

**More Benefits**

- Better performance when there is external shading
- Fascinating Visual Journey
- 5400Pa Mechanical Load

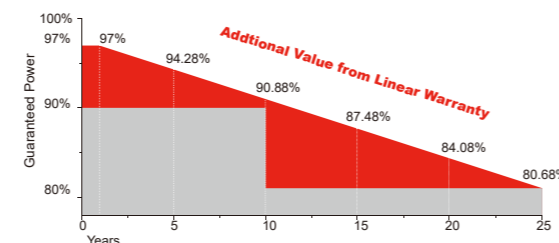
**Certifications**



**Insurances**



**Warranty**



**10 YEARS** Guarantee on product material and workmanship | **25 YEARS** linear power output warranty

**Electrical Characteristics**

|                              | SRP-305-E01B          |       | SRP-310-E01B |       | SRP-315-E01B |       | SRP-320-E01B |       |
|------------------------------|-----------------------|-------|--------------|-------|--------------|-------|--------------|-------|
|                              | STC                   | NOCT  | STC          | NOCT  | STC          | NOCT  | STC          | NOCT  |
| Maximum Power (Pmp)          | 305                   | 226   | 310          | 230   | 315          | 233   | 320          | 237   |
| Open Circuit Voltage (Voc)   | 44.1                  | 40.72 | 44.35        | 40.94 | 44.6         | 41.17 | 44.85        | 41.4  |
| Short Circuit Current (Isc)  | 8.83                  | 7.10  | 8.92         | 7.19  | 9.02         | 7.24  | 9.11         | 7.32  |
| Maximum Power Voltage (Vmp)  | 35.8                  | 33.57 | 36           | 33.75 | 36.2         | 33.93 | 36.4         | 34.14 |
| Maximum Power Current (Imp)  | 8.52                  | 6.74  | 8.62         | 6.82  | 8.71         | 6.87  | 8.80         | 6.94  |
| Module Efficiency at STC(ηm) | 17.93                 |       | 18.23        |       | 18.52        |       | 18.81        |       |
| Power Tolerance              | (0, +4.99)            |       |              |       |              |       |              |       |
| Maximum System Voltage       | 1000 (TÜV), 1000 (UL) |       |              |       |              |       |              |       |
| Maximum Series Fuse Rating   | 15                    |       |              |       |              |       |              |       |

STC: Irradiance 1000 W/m2 module temperature 25°C AM=1.5;  
NOCT: Irradiance 800 W/m2 ambient temperature 20°C wind speed :1m/s  
Power measurement tolerance: +/-3%

**Temperature Characteristics**

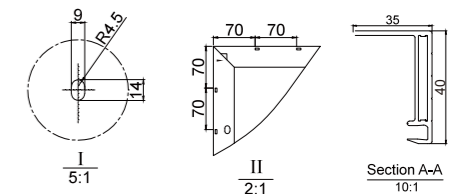
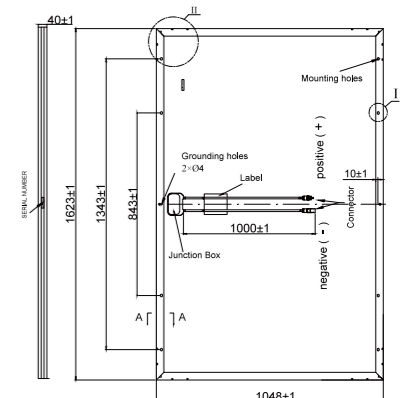
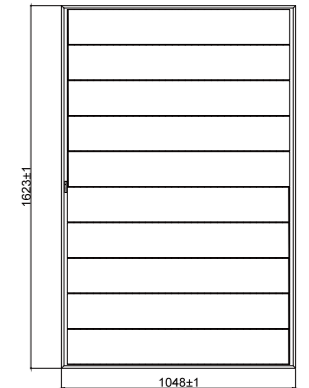
|   |              |
|---|--------------|
| Pmax Temperature Coefficient              | -0.40 %/°C   |
| Voc Temperature Coefficient               | -0.32 %/°C   |
| Isc Temperature Coefficient               | +0.05 %/°C   |
| Operating Temperature                     | -40 ~ +85 °C |
| Nominal Operating Cell Temperature (NOCT) | 45±2 °C      |

**Mechanical Specifications**

|                     |                                 |
|---------------------|---------------------------------|
| External Dimensions | 1623x 1048x 40 mm               |
| Weight              | 19.0 kg                         |
| Solar Cells         | Mono crystalline                |
| Front Glass         | 3.2 mm tempered glass, low iron |
| Frame               | Anodized aluminium alloy        |
| Junction Box        | IP67                            |
| Output Cables       | 4.0 mm2, cable length: 1000 mm  |
| Connector           | MC4 Compatible                  |
| Mechanical Load     | 5400 Pa                         |

**Packing Configuration**

| Container             | 20'GP                                       | 40'HGP |
|-----------------------|---|--------|
| Pieces per Pallet     | 20 per upper pallet;<br>26 per lower pallet | 26     |
| Pallets per Container | 12  | 28     |
| Pieces per Container  | 276   | 728    |



**I-V&P-V Curve (SRP-310-E01B)**

